

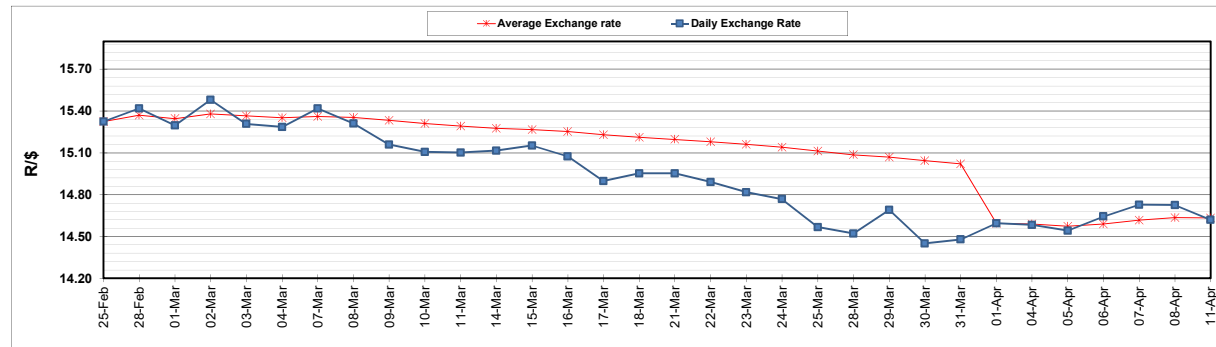
	PETROL 95 ULP	PETROL 93 ULP & LRP	DIESEL 0.05%	DIESEL 0.005%	ILL. PAR.
GAUTENG PUMP PRICE (SA c/l) AS FROM 06/04/2022	2,196.000	2,163.000	-	-	-
WHOLESALE PRICE (SA c/l) AS FROM 06/04/2022	-	-	2,101.440	2,123.840	1,584.688
SINGLE NATIONAL MAXIMUM RETAIL PRICE	-	-	-	-	2,045.000
BASIC FUEL PRICE - 11/04/2022 (SA c/l)	1,161.197	1,141.265	1,330.372	1,342.888	1,289.729
PRESS RELEASE CONTRIBUTION TO BFP 06/04/2022 - 11/04/2022 (SA c/l)	1,278.710	1,255.710	1,402.630	1,425.030	1,363.128
UNIT OVER/(UNDER) RECOVERY - 11/04/2022 (SA c/l)	117.513	114.445	72.258	82.142	73.399
AVERAGE BASIC FUEL PRICE 01/04/2022 - 11/04/2022	1,185.531	1,165.025	1,371.477	1,385.251	1,345.338
AVERAGE UNIT OVER/(UNDER) RECOVERY 01/04/2022 - 11/04/2022	16.704	17.639	(95.276)	(93.507)	(96.210)

ANALYSIS MOVEMENT OF AVERAGE OVER/(UNDER) RECOVERY

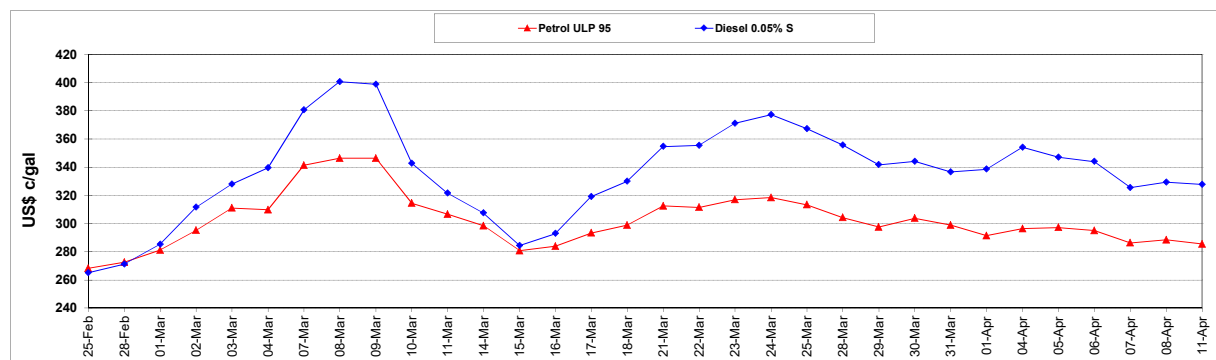
	PETROL 95	PETROL 93	DIESEL 0.05%	DIESEL 0.005%	ILL. PAR.
- MOVEMENT IN INTERNATIONAL PRODUCT PRICES	(14.713)	(13.236)	(131.622)	(130.218)	(131.863)
- MOVEMENT IN EXCHANGE RATE	31.418	30.875	36.346	36.711	35.653
AVERAGE UNIT OVER/(UNDER) RECOVERY 01/04/2022 - 11/04/2022	16.704	17.639	(95.276)	(93.507)	(96.210)

R/\$ EXCHANGE RATE - (R/\$14.6190 - 11/04/2022)

EXCHANGE RATE USED IN BASIC FUEL PRICE



INTERNATIONAL PRODUCT PRICES OF BASKET USED IN BASIC FUEL PRICE



BASIC FUEL PRICE IN SA CENTS PER LITRE

